



# Agenda

1. COVID-19 Response Overview
2. Vaccine Distribution Process and Phases
3. Trends & Survey Results
4. Call to Action
5. Contact Information



# Overview



# COVID-19 Response

We have come a long way since March and swift actions early on helped us protect the health and safety of Coloradans.



We went from **160** tests per day at the state lab to nearly **55,000** per day statewide.



PPE: we have enough swabs and PPE to conduct testing for the next calendar year.



Coloradans are wearing masks statewide, slowing the spread of the virus.



We have **3** alternative care sites should they be necessary with up to **2,200** hospital beds to expand ICU capacity if required.





# Distribution

# Early Phase I Timeline: Winter 2021



Given the limited number of vaccines we will receive early on, we are hopeful to get through Phase 1 by the end of Winter.

**This is dependent on receiving a steady supply of doses from the Federal government, and steady administration by healthcare providers and Local Public Health Agencies.**

# Phase I: COVID-19 Vaccines



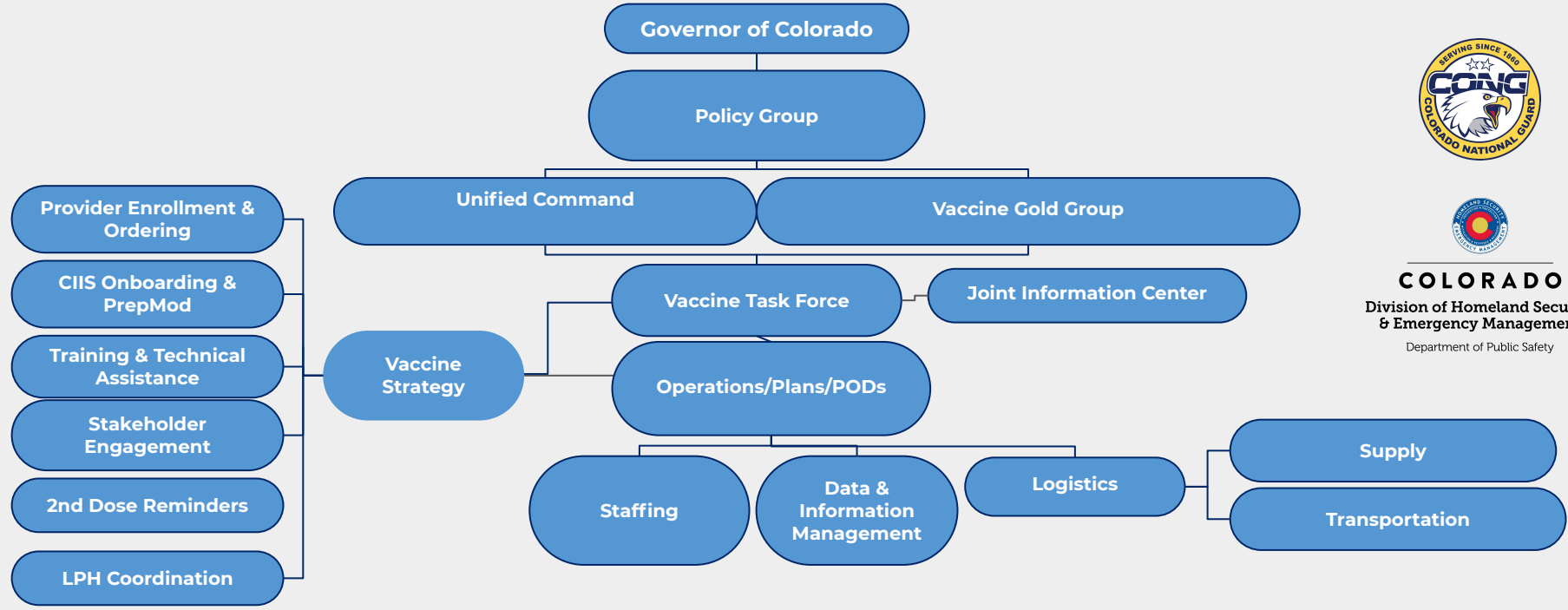
- 2 doses (21d)
- Efficacy: 95%
- Begins arriving in December



- 2 doses (28d)
- Efficacy: 94.5%
- Begins arriving in December

These vaccines are more effective than the flu vaccine and comparable to the efficacy rate of the measles component of the MMR vaccine.

# COVID-19 State Infrastructure



**COLORADO**  
 Division of Homeland Security  
 & Emergency Management  
 Department of Public Safety



# Phase I Roles & Responsibilities

## Colorado Vaccine Task Force

Plan and resource the execution of the Vaccination Plan

Monitor progress, identify friction points

Conduct dynamic planning to resolve issues and adapt to changes in the program

## CDPHE

Approve and enroll providers into the CDC COVID Vaccine Program & submit to CDC

Coordinate allocation and distribution of vaccines to pre-positioned hubs and providers

Provide technical assistance and guidance to LPHAs & providers

Track and report daily vaccine allocation, orders, distribution, & usage

## LPHAs

Lead vaccine response planning for their county(ies)

Administer vaccine to Phase I priority populations and report to the Colorado Immunization Information System (CIIS)

Identify providers to enroll in CDC COVID Vaccine Program

Provide technical assistance to providers

## Providers (hospitals, pharmacies, FQHCs, doctor offices, etc)

Complete CDC COVID Vaccine Program enrollment

Comply with CDC's Advisory Committee on Immunization Practices (ACIP) guidelines

Administer vaccine to Phase I priority populations and report to CIIS



# Collaborating with Local Government

- **Community/County-wide approach**
  - Public Health, Health Care system(s), Emergency Response, Incident Command, Law Enforcement, Medical Community, Electeds, Leaders.
- **Information updates**
- **Provider and Community education and Q&A sessions**
- **Local leadership for COVID vaccine teams**
- **Local site and plan development**
  - **Priorities**
  - **Implementation steps**

# Prioritization Philosophy

Our focus in determining vaccine prioritization has been based on:

- 1 How we can save the most lives.
- 2 Ending the crisis that has been brought on by the pandemic as quickly as possible.

# COVID-19 VACCINE DISTRIBUTION

## PHASE 1

Winter



1A

### Highest-risk health care workers and individuals:

- People who have direct contact with COVID-19 patients for 15 minutes or more over a 24-hour period.
- Long-term care facility staff and residents.

1B

### Moderate-risk health care workers and responders:

- Health care workers with less direct contact with COVID-19 patients.
- Workers in home health/hospice and dental settings.
- EMS, firefighters, police, correctional workers, dispatchers, funeral services, other first responders, and COVID-19 response personnel.

## PHASE 2

Spring



2

### Higher-risk individuals and essential workers:

- People age 65 or older.
- People of any age with obesity, diabetes, chronic lung disease, significant heart disease, chronic kidney disease, cancer, or are immunocompromised.
- People who interact directly with the public at work, such as grocery store workers and school staff.
- People who work in high density settings like farms and meat-packing plants.
- Workers serving people that live in high-density settings.
- Other health care workers not covered in Phase 1.
- Adults who received a placebo during a COVID-19 vaccine clinical trial.

## PHASE 3

Summer



3

### The general public:

- Anyone age 18-64 without high risk conditions.

\*Timeline subject to change based on supply chain. Prioritization subject to change based on data, science, availability.



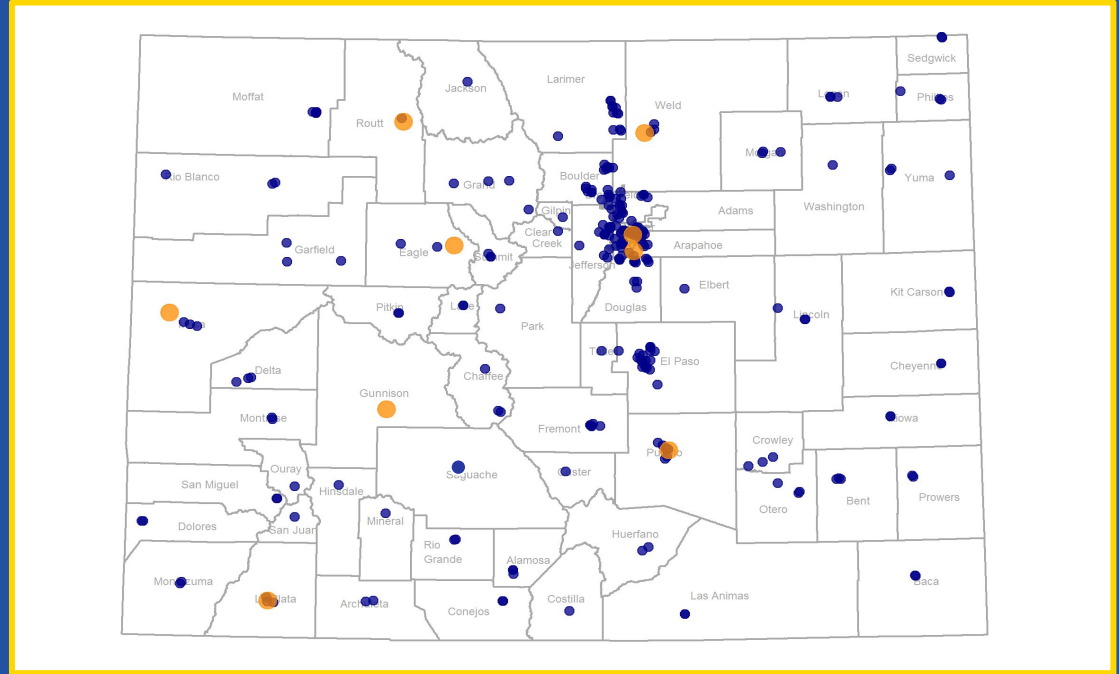
# Colorado Phase 1 Provider Map

## ● Distribution Centers

Location where Pfizer vaccine will be stored at ultra low temps before going to providers around the state.

## ● Providers

Location that will administer the vaccine.





# Colorado Phase 1 Provider Map



The identified locations across the state were chosen for their unique abilities to store, monitor, and handle vaccines in **ultra-cold temperatures (-60°C to -80°C)**, as well as their willingness to redistribute COVID-19 vaccine(s) to other Phase 1 providers in their regions.



The state also considered **equitable geographic distribution**, as well as **transportation logistics** given expected winter conditions in the coming months.

# Phase I Distribution for Eligible Coloradans

Early doses are very limited

- Over time, they will expand.
- All doses will be free.
- Every County will have access.

Initially, Phase 1 Vaccines will be administered at:

- Local Public Health Agencies
- Hospitals and health systems
- Select Federally Qualified Health Centers
- Some pharmacies

Longer term, vaccines will be administered at:

- Local Public Health Agencies
- Hospitals and health systems
- Federally Qualified Health Centers
- Rural Health Centers
- Safety Net Clinics
- Pharmacies
- Doctor's offices
- And other locations

# Phase I: Pfizer Week 1-Distribution

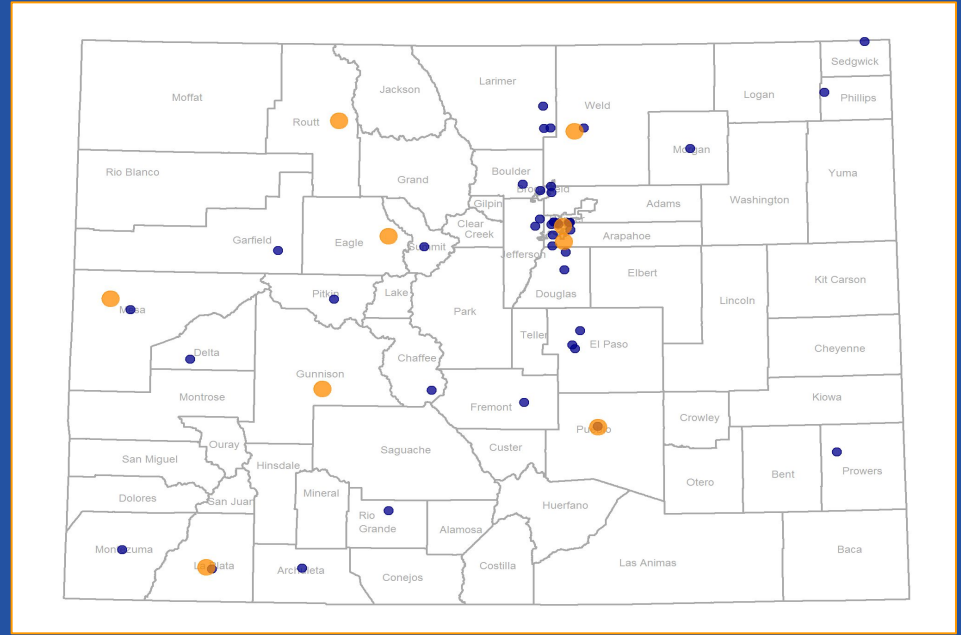
Week of December 14th-1st shipment of Pfizer vaccine: 46,800. They will be distributed to the following locations:

## ● Distribution Centers

Location where Pfizer vaccine will be stored at ultra low temps before going to providers around the state.

## ● Providers

Location that will administer the vaccine.



To view details locations and allocation: [covid19.colorado.gov/vaccine-for-coloradans](https://covid19.colorado.gov/vaccine-for-coloradans)

# Phase I: Distribution

**This week we will order  
95,600 Moderna vaccines.**

We expect to receive them  
by the week of December 21st.

After that, we anticipate a  
**shipment every week**  
but that depends on the federal  
government.



# Phase I: Where People Can Receive the Vaccine

The majority of Phase 1 early recipients of the vaccine will receive it through their employer, local public health agency, or through the federal Pharmacy Partnership for Long-term Care (LTC) Program if they are residents of a long-term care center.

- More information about **provider settings and options for Phase 2 and Phase 3 recipients** will be coming soon.
- If you have **questions about your eligibility**:

**CALL COHELP**  
**1-877-462-2911**

**VISIT**  
**COVID19.COLORADO.GOV/VACCINE**

# Vaccine Reporting and Monitoring

- **Colorado will require all COVID-19 vaccination providers** to report administered doses to the Colorado Immunization Information System (CIIS) **within 72 hours of vaccine administration to ensure not one dose goes to waste.**
- **Every Coloradan's immunization records are confidential, personal medical information that will never be shared publicly.** The state will report and collect public health information on the total number of residents who have been vaccinated in Colorado, but this data will not be attached to any individual's personally identifying information.
- The state of Colorado will not share personal information with the federal government.



**We need your help!**





# Vaccine Attitudes Survey Results



# Rigorously Tested Vaccines

- **Vaccines are rigorously tested** by leading scientists in the private sector and then **approved by the Food and Drug Administration** before they are available to members of the public.
- This vaccine process is **overseen by the top scientists and doctors** in our nation.
- **FDA advises a minimum of 3000 participants to assess safety.**
  - The current Phase 3 trials have **tens of thousands of participants all over the world.** The more people in a trial, the more reliable the results and the more sure we can be the drug is safe.
- **People from diverse communities participated in this research,** including populations disproportionately impacted by COVID-19 due to generational systemic inequities, including Black/African American, Latino/a, and American Indian/Alaska Native/Native Hawaiian communities.



# COVID-19 Vaccine Acceptance Variation

Willingness to be vaccinated varies among race, ethnicity and gender.

POPULATION	MEN	WOMEN
General Population	76%	57%
Hispanic	67%	51%
African American	58%	50%

- Overall, **66% of Coloradans would get vaccinated** with an FDA approved vaccine in early 2021, while **34% would not**.
- Among those who would get vaccinated, **48% would as soon as they could**, while **45% would wait and 7% are not sure**.

# Motivators for Getting Vaccinated

## Reasons for saying “Yes”

- Protect myself, my family
- End the pandemic

## Reasons for waiting, or saying “No”

- Not tested enough
- Side effects, long-term effects
- General concerns about vaccination
- Political influence on the process
- Too rushed

# Messaging Considerations

- Get vaccinated to **protect yourself, your family and others**
- **The vaccine process has been overseen by the top scientists and doctors in our nation.** If they recommend it, we should feel safe.
- **Vaccines are our gate to a future without this pandemic.** Getting the COVID-19 vaccines is a gateway to a more normal life. As more and more people are protected, the more we can go back to enjoy the things that we like again safely.
- Vaccines are free
- While vaccines are starting to come into our state, it may take a few months until everyone can access it because of limited supplies. **To slow the spread for everyone, we need to prioritize health care providers and Coloradans who are most at risk for getting severely sick or even dying.**
- Until the vaccine is widely available, **we all need to continue to follow critical public health guidance.** Prevention methods still include: wearing a mask in public, maintaining at least 6 feet physical distance from others not in our household, avoiding large crowds, washing our hands often, and staying home when we are sick.



# COVID-19 Vaccine Key Messages

We need your help communicating with your constituency and emphasize **these 3 points**:

1

The vaccine is safe and effective

2

The first phase will focus on frontline health care workers, first responders, and our most vulnerable populations living in long term care facilities.

3

It will be a few months till the general public can get the vaccine (probably by summer). Until then, we need everyone's help doing their part: wear a mask, social distance, limit gatherings, wash your hands.

# COVID-19 Vaccine Toolkit

## Stakeholder Vaccine Communications Toolkit includes:

- VACCINE WEBSITE
- TOPLINE MESSAGING
- SAMPLE STAKEHOLDER OUTREACH EMAIL
- SOCIAL GRAPHICS
- RESOURCES: FAQ



**THE COVID-19 VACCINE IS FREE**

Cost will not be an obstacle to getting the vaccine for Coloradans. Medicare, Medicaid, CHIP, and private insurance are required to cover the cost of the COVID-19 vaccines. In addition, uninsured Coloradans will have access to free vaccines.

GOVERNOR JARED POLIS

**MYTH VS. FACT**  
THE COVID-19 VACCINE

**MYTH:**  
The vaccine was rushed and has not been tested enough.

**FACT:**  
The vaccine process has been overseen by the top scientists and doctors in our nation.

The vaccines have passed all the necessary tests to evaluate their safety and effectiveness.

GOVERNOR JARED POLIS


**MYTH VS. FACT**  
THE COVID-19 VACCINE

**MYTH:**  
The vaccine is widely available to all Coloradans right now.

**FACT:**  
While vaccines are starting to come into our state, it may take a few months until everyone can access it because of limited supplies.

To slow the spread for everyone, we need to prioritize health care providers and Coloradans who are most at risk for getting severely sick or even dying.

GOVERNOR JARED POLIS




**What the vaccine is**

A safe and widely tested vaccine that will be distributed first to our healthcare workers, critical workforce, high-risk individuals, and essential workers.

**What the vaccine is not**

A reason to stop following public health guidelines. We must continue to wear a mask in public, maintain at least 6 feet physical distance from others not in our household, and avoid large crowds.

GOVERNOR JARED POLIS



**1 PRECLINICAL PHASE**  
Researchers identify the correct antigens to fight the virus.

**2 CLINICAL TRIALS PHASE 1**  
Vaccine tested on a small group of adults for safety and common side effects.

**PHASE 2**  
Vaccine tested on several hundred volunteers for safety, dosage, and efficacy for how well the vaccine works.

**PHASE 3**  
Vaccine tested in the largest group of volunteers for safety and efficacy. This phase also compares people who have received the vaccine to those who have not received the vaccine.

**3 APPROVALS**  
Vaccine sent to the FDA for regulatory approval. The FDA carefully reviews the data from all the clinical trials. Then they decide whether the vaccine would be safe and effective.

GOVERNOR JARED POLIS



# We're here to help

**Xander Martin**

**Deputy Coordinator for COVID-19 Response**

**[xander.martin@state.co.us](mailto:xander.martin@state.co.us)**

